

Society for Art & Cultural Heritage of India
In Partnership with Palo Alto Art Center

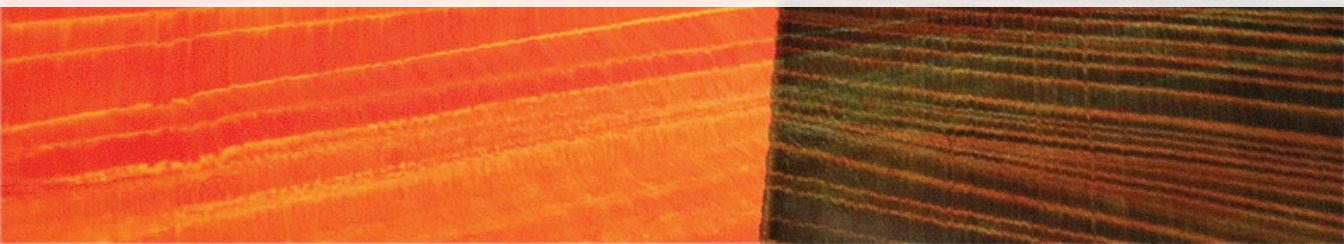
is pleased to Invite You for an Artist's Talk



Painting Performs, Carves, and Molds Image

by **Sandeep Mukherjee**

Distinguished Contemporary Artist and Associate Professor,
Art Department, Pomona College, Claremont



Saturday
June 2, 2018
4:00 PM

Palo Alto Art Center

1313 Newell Road, Palo Alto, CA

The Event is Free and Open to the Public

Rsvp: info@sachi.org; Tel. 650-918-6335

Artist Sandeep Mukherjee, Guggenheim Fellow, 2017 and the Thomas/Mann Villa Aurora, Berlin Fellow, 2017 will present his diverse body of work over the last two decades, discussing it in relation to contemporary painting, installation, and performance art.

For over a decade Sandeep Mukherjee's work has explored the notion of abstracting as a means to image a particular aspect of flowing matter. Working in painting, drawing and installation, the work has been process oriented and improvisational. Following multiple paths of inquiry such as imaging the performing body, subtracting the material body and enfolding the corporeal body, the work continues to explore the relationship between process, affect and image.



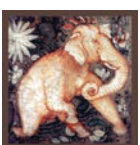
Sandeep Mukherjee

Sandeep Mukherjee is a visual artist and educator living and working in Los Angeles.

His works are in numerous public collections, including those of MOCA, Los Angeles; MOMA, New York; LACMA; UCLA Hammer Museum, Los Angeles, the Kiran Nadar Museum of Art, New Delhi and the Jumex Collection, Mexico City. Mukherjee has had solo shows at Brennan & Griffin (New York), Project 88 (Mumbai), Margo Leavin Gallery (Los

Angeles), 68 Projects (Berlin), Chimento Contemporary (Los Angeles), Shilpakala Academy (Dhaka) and the Pomona College Museum of Art among others.

Mukherjee received the Guggenheim fellowship in 2017 and the Thomas Mann/Villa Aurora, Berlin Fellowship in 2017. He was also the recipient of the 2015-16 City of Los Angeles (COLA) Fellowship. Sandeep Mukherjee received an MFA from UCLA, and a BFA from Otis College of Art and Design, Los Angeles. Mukherjee is currently an Associate Professor in the Art Department at Pomona College, CA.



SACHI

Society for Art & Cultural Heritage of India

www.sachi.org

SACHI extends special appreciation to Sheila & Ketan Kothari, and to Carmen Saura & Manish Kothari for generous program support.