

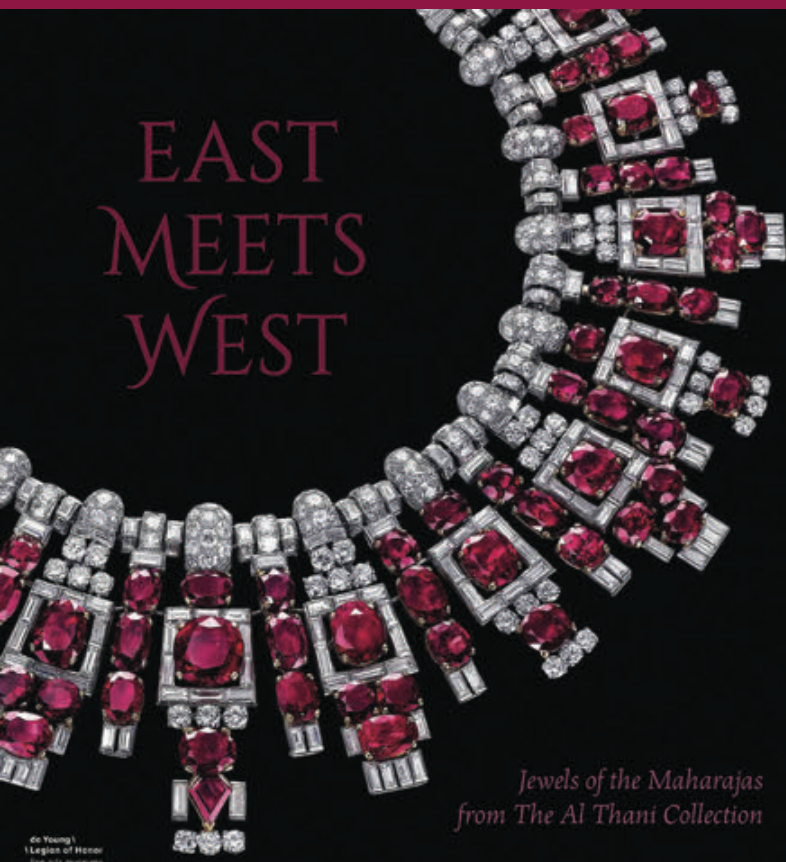
SACHI, Society for Art & Cultural Heritage of India,

is thrilled to Invite you to a
Curator-Led Private Tour of the Exhibition

EAST MEETS WEST:

Jewels of the Maharajas from the Al Thani Collection

A VISIT WITH CURATOR MARTIN CHAPMAN



EAST
MEETS
WEST

*Jewels of the Maharajas
from The Al Thani Collection*

**Saturday,
January 26, 2019**

11:00 a.m. to 12:00 p.m.
(Please arrive 15 minutes early)

LOCATION

Legion of Honor
Lincoln Park
100 34th Avenue (at Clement Street)
San Francisco, CA 94121

FEES

\$30 SACHI Members,
\$35 SACHI Non-Members
(Includes museum admission and private
tour of exhibition with the curator. We
are sorry, per museum rules no museum
membership privileges apply for this tour.)

RSVP at [EAST MEETS WEST](#)

RSVP required. Limited to 20 participants
only, first come, first served.

FURTHER QUESTIONS?

info@sachi.org, 650.918.6335

Please join SACHI for a private tour of
this dazzling exhibition led by curator
Martin Chapman. Kindly plan on arriving
15 minutes prior to the start of the tour,
we will start on time. You are welcome to
browse the galleries after the one-hour tour
is concluded.

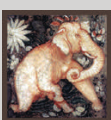
ABOUT THE EXHIBITION

This exhibition explores the cultural and material exchanges between India and Europe through jewelry and precious objects ranging from the seventeenth century to the present. It features more than 150 pieces from The Al Thani Collection, all associated with Mughal emperors, maharajas, and their courts. These objects include jewelry for festive occasions, weapons such as swords and daggers, and precious works of art for display or use. Diamonds were at the center of this exchange, which, up until the mid-eighteenth century, were mined in India and then traded to Europe where they were often recut in sparkling new forms. European enameling on courtly jewels presented as diplomatic gifts inspired the Mughal courts from the sixteenth century to develop goldsmiths' work decorated with enamel, a practice that continues in India to this day. In the twentieth century, the exchange ran in the opposite direction through Indian influences and gemstones that inspired the work of the great Parisian jewelry houses. Gender plays a significant role in this exhibition as, contrary to Western expectations, the most splendid jewelry was supplied exclusively for the male rulers of India. Furthermore, great pieces of jewelry conceived to adorn the queens of Europe could be happily worn by male maharajas in India.

Highlights include famous gemstones such as the Idol's Eye (a 70.2-carat diamond and the largest blue diamond in the world), the Arcot II diamond (formerly belonging to the British Crown Jewels) and other treasures such as a jade dagger owned by Emperor Shah Jahan, the builder of the Taj Mahal.

ABOUT THE CURATOR

Martin Chapman is curator in charge of European decorative arts and sculpture and interim curator in charge of European art at the Fine Arts Museums of San Francisco. His recent publications include *The Sculpture of Auguste Rodin at the Legion of Honor* (2016); *Breguet: Art and Innovation in Timekeeping* (2015); *The Salon Doré from the Hôtel de La Trémoille* (2014); *The Art of Bulgari: La Dolce Vita and Beyond, 1950–1990* (2013); and *Royal Treasures from the Louvre: Louis XIV to Marie Antoinette* (2012).



SACHI
Society for Art & Cultural Heritage of India
www.sachi.org

ACKNOWLEDGMENTS

SACHI expresses its gratitude to Madhu and Raj Khanna for generous program support.