

SACHI Invites You to a Special Exhibition

The ICA San José and
Montalvo Arts Center
jointly present

PLACE: Reckonings by Asian American Artists



Ranu Mukherjee, *Passage*

Join us on a Group Visit
Limited to 30 Guests

For a Curator-led Tour
accompanied by Artists
Ranu Mukherjee and Namita Paul

Co-Curators:
Judy Koong Dennis and Zoë Latzer

The Event is Free and Open to All. Please Rsvp: info@sachi.org

Saturday, June 8, 2024 | 11:00 AM – 12:00 Noon

ICA San Jose, 560 S. 1st Street, San Jose, CA 95113

Optional No-host Lunch follows the Special Tour – Venue: TBD

All of the participating artists represent powerful voices as artists-in-residence of the Lucas Artists Program at Montalvo Arts Center. This exhibition honors the diverse voices of contemporary artists of East Asian, Southeast Asian, South Asian, and Pacific Islander ancestries who have had to contend with histories of discrimination, exclusion or violence.

The exhibition features installations, paintings, photographs, and videos. Some artists examine the physical, mental, and emotional toll of migrating or immigrating to a new country and reflect on what it means to be “American.”

Other artists explore what it means to claim one’s identity as a member of a dynamic diasporic community, melding American influences with the rich cultural traditions of their ancestral countries. **Ranu Mukherjee** employs the use of sari materials, and images of animals, flowers, people, and trains in India to address topics such as migration, transformation, and our changing environment. **Namita Paul’s** work underscores the idea that home is a place that is carried in our personal and collective memories long after our departure.



Ranu Mukherjee, *Hold the Chaos*

In a different vein, an artist collective examines the often unacknowledged history of nearly 12,000 Chinese railroad laborers, used indiscriminately and unfairly in creating wealth for very few Americans. A parallel commentary on the development of Silicon Valley as the “modern Gold Rush” has contributed to ending the livelihoods of many Japanese American growers in the Valley of Heart’s Delight.

The show concludes with perspectives on ‘belonging’ gathered from Asian Americans and other immigrants, involving community engagement, participatory research, and cross-cultural bridging.

*This Exhibition celebrates the 20th anniversary of the
Lucas Artists Residency Program at Montalvo Arts Center.*

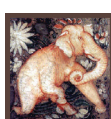


Ranu Mukherjee received her BFA in Painting from the Massachusetts College of Art, Boston, MA (1988), and her MFA in Painting at the Royal College of Art, London, UK (1993). She serves on the Board of Trustees at the San Jose Museum of Art, and on the Board of Directors at Bridge Live Arts. She is a Professor and Chair of the Film program at California College of the Arts, San Francisco.

Mukherjee explains, “Working with pigment, digital pattern, sari cloth, choreography and animation, I bring together South Asian, European and American references and materials... they mix, converse and interrupt each other”, ultimately “reconfiguring relationships and picturing differently tuned worlds.”

Namita Paul holds a BA in Interdisciplinary Visual Arts, MA in Cultural Studies from University of Washington, and an MFA from California College of the Arts, San Francisco.

Bay Area artist, Paul draws from personal and political histories, engaging with themes of rupture and repair, migration, architectural space, memory and time. Her current work explores the ways in which physical spaces we have inhabited stay with us long after we have left them. Through material and form, Namita makes visible markers of personal and collective memories. Her studio practice guided by idea-based works, includes large scale installation, drawing, painting, printmaking, textiles and photography.



SACHI
Society for Art & Cultural Heritage of India
www.sachi.org

Image Credit:
PLACE: *Reckonings by Asian American Artists*, 2024, installation view,
ICA San José. Photo: Glen Cheriton.