

SACHI Invites You To Join
A Very Special Presentation and Viewing

One-of-a-Kind Exquisitely Crafted Jewels

Presented by Delhi-based designer
Sirjana Singh



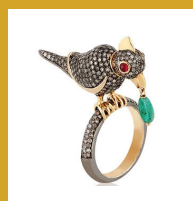
From Golconda Diamonds to Jadaau - A Fine Jewelry Designer's Perspective

Join **Sirjana Singh** on a storied journey that begins with diamonds from the historically famed mines of Golconda to modern times. Modern-era jewelry designs now combine Persian inlay techniques used by the Mughals to create architectural marvels as the Taj Mahal, with the India-born 'kundan' technique to create unique, one-of-a-kind jewels in the 'Polki' Jadaau technique.

Sirjana's tour through the gemstone heritage of India encompasses her personal insights and learning as a designer, her work with craftsmen who use generational tools and techniques, and showing how she takes a piece from inception to the final jewel.

Sunday, May 4, 2025, 3-5 PM

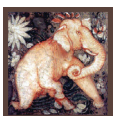
Venue: 87 Nora Way, Atherton
RSVP: info@sachi.org; Tel: 925-360-1195



Sirjana Singh is a Delhi-based fine jewelry designer with an aesthetic that fuses modern style and classic jewelry techniques invented in India. The jewelry is elevated by the use of high-quality gemstones and unusual settings resulting in one-of-a-kind designs that delight.



Learn more at
www.sirjanasingh.com



SACHI
Society for Art & Cultural Heritage of India
www.sachi.org